



RECP #: 752814

RECORDED 5/8/2019 AT 1:19 PM BK# 2620 PG# 1856
Debra K. Lee, CLERK OF LARAMIE COUNTY, WY PAGE 1 OF 1

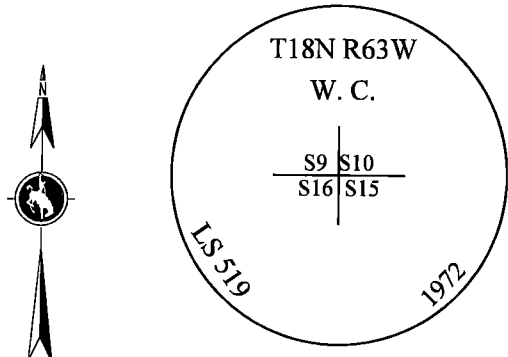
STATE OF WYOMING CORNER RECORD

(In compliance with the CORNER PERPETUATION AND FILING ACT, Wyoming Statutes, 1997 Section 33-29-140, et. seq., and the Rules and Regulations of the Board of Registrations for Professional Engineers and Professional Land Surveyors)

SOUTHEAST CORNER SECTION 9, T. 18 N., R. 63 W., 6TH P.M., LARAMIE COUNTY, WYOMING

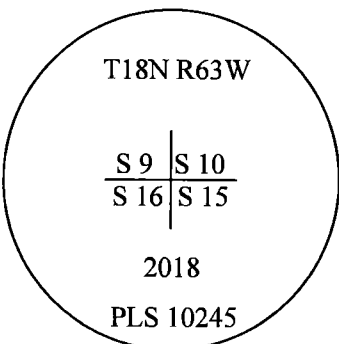
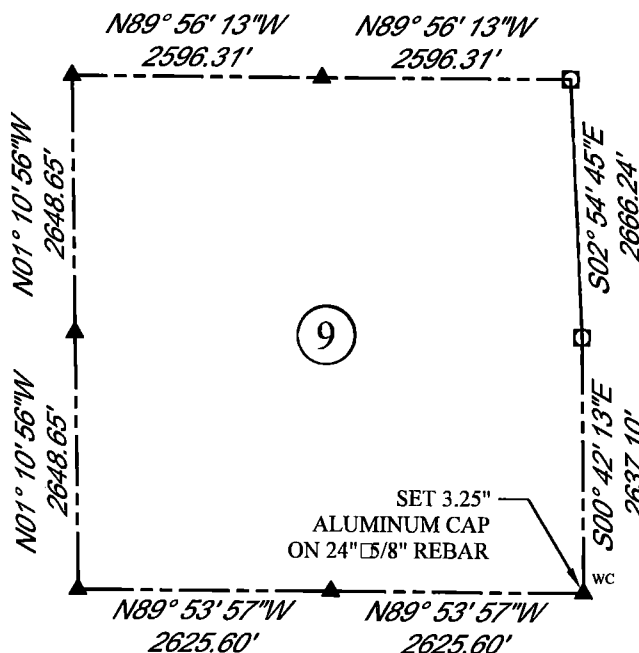
GLO: SET A SANDSTONE 18X12X6, 10 IN. DEEP, MARKED WITH 4 NOTCHES ON S. SIDE AND 3 NOTCHES ON E. SIDE, FOR COR. TO SECS. 9, 10, 15, 16.

FOUND: 2" BRASS CAP (WITNESS CORNER) AS SHOWN. SET AC AT TRUE POSITION 40' SOUTHERLY AS DESCRIBED ON 1972 CORNER RECORD FILED BY R.L. HUDSON, LS 519.



SCALE: NONE
NORTH DETERMINED BY
G.P.S OBSERVATIONS

SET 3.25" ALUMINUM CAP ON #5 REBAR,
0.4' BELOW SURFACE, STAMPED AS
SHOWN, IN CENTERLINE OF OLD COUNTY
ROAD. CORNER IS SET 39.86' FT SOUTH OF
FOUND BRASS CAP W.C. PLACED A
MOUND OF STONES ON ALL SIDES OF
CORNER.



LEGEND:

- FOUND BLM CAP
- FOUND USFS CAP
- FOUND STONE
- FOUND PRIVATE MONUMENT
- ◆ CALCULATED POSITION
- ▲ SET MONUMENT (LS10245)
- SECTION LINE

DATE OF FIELD WORK: 8/30/2018 OFFICE REFERENCE: MERIDEN

CROSS INDEX DIAGRAM

A	1	2	3	4	5	6	7	8	9	10	11	12	13	14	15	16	17	18	19	20	21	22	23	24	25	A
B																										B
C		6																								C
D			5																							D
E				4																						E
F					3																					F
G			7																							G
H				8																						H
I					9																					I
J						10																				J
K							11																			K
L								12																		L
M			18																							M
N				17																						N
O					16																					O
P						15																				P
Q			19																							Q
R				20																						R
S					21																					S
T						22																				T
U							23																			U
V								24																		V
W									25																	W
X										26																X
Y											27															Y
Z												28														Z
													29													
														30												
															31											
																32										
																	33									
																		34								
																			35							
																				36						

WOOD
2615 AVIATION DRIVE
SHERIDAN, WY 82801
PH: 307-675-6400

THIS CORNER RECORD WAS
PREPARED BY ME OR UNDER
MY DIRECTION AND
SUPERVISION,
SEAL AND SIGNATURE

wood.

